

PROINERT®² RELAY ACTUATOR ASSEMBLY

DESCRIPTION

The Relay Actuator provides means to pneumatically operate the Fike ProInert Valve inert gas cylinder by providing the force required to extend a piston that will open the valve, allowing the agent to be released from the cylinder.

The Relay Actuator is activated from the cylinder pressure / UVO and provides the pressure to operate up to an additional 60 ProInert cylinder valves and / or Relay Actuators.

SPECIFICATIONS

Part Number: IG71-220
 Material: Brass
 Temperature Range: -4°F to 120°F (-20°C to 50.0°C)

INSTALLATION

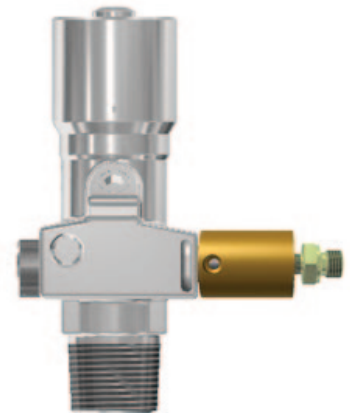
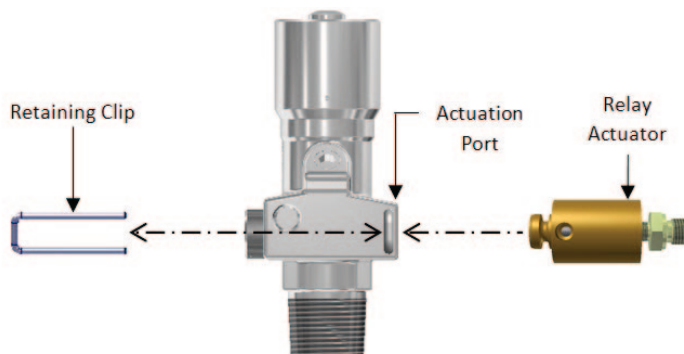
The following items should be completed prior to final installation of the Relay Actuator and UVO:

- Cylinder installation should be complete and secured in place
- Discharge piping installation should be complete and all bracing, brackets, etc. in place
- The discharge nozzles should be installed
- The detection & control system installation should be complete & tested – no faults shall be present

Important Note: Check to ensure Relay Actuator is armed (Firing Pin retracted) before installing to the ProInert Valve on the cylinder. If the Relay Actuator is in the operated position (Firing Pin extended), reset the actuator by depressing the latching ball into its housing with the aid of the reset tool (P/N IG71-0166), this will retract the actuation piston.

- | Step | Details |
|------|--|
| 1 | Remove Retaining Clip and Plug from the ProInert Valve Actuation Port. |
| 2 | Insert Relay Actuator into ProInert Valve Actuation Port and re-insert Retaining Clip. |

The cylinder is "NOW ARMED".



APPROVALS:

- UL Listed
- ULC Listed
- FM Approved



MULTIPLE CYLINDER INSTALLATION

Important Note: Before starting installation, check to ensure all actuators are armed (Firing Pin retracted).

- | Step | Details |
|------|---|
| 1 | Remove hose from the last Relay Actuator (Item 2 - P/N IG71-002) in the cylinder bank. |
| 2 | Install R 1/8" x G 1/4 Adaptor, Sealing Washer and Vent Assembly (Item 3 - P/Ns 02-10797, 02-10926 & IG71-026). Ensure that the threaded connection into the Relay Actuator (Item 2) is made with either Teflon tape or thread sealant (Loctite 542 or equivalent). Install this Relay Actuator to the last cylinder in the bank and secure in position with the retaining pin. |
| 3 | Install the remaining Relay Actuators on to the cylinder valves and secure them in position with the retaining pins. Connect the hoses on these actuators in a daisy chain as shown by installing the 1/4" JIC side of Actuation Hose into the end port onto Relay Actuator. |

Important Note: A maximum of 60 Prolnert cylinders and / or Relay Actuators can be operated from a single Relay Actuator.

- | | |
|---|--|
| 4 | For double / multiple row installations, connect the actuator hoses between rows with the G 1/4 x G 1/4 adaptor (P/N 02-10824) and actuation hose (P/N 02-13713) (these items must be ordered separately). |
| 5 | Connect the hose on Relay Actuator by installing the 1/4" JIC side of Actuation Hose into the outlet port on Relay Actuator. |
| 6 | Connect the hose from previous Relay Actuator into the inlet port on Relay Actuator (Item no. 1). |
| 7 | Remove Retaining Clip and Plug from the Prolnert Valve Actuation Port. |
| 8 | Insert Relay Actuator (Item no. 1) into Prolnert Valve Actuation Port and re-insert Retaining Clip. |

The cylinder is "NOW ARMED".

Note: All connections must be wrench tight.

